

  
**Long Range Wireless Intercoms up to 4000 Ft**  
**Hands-Free Full Duplex Audio**  
**Based on 900 MHZ Technology**



No Push to Talk Function!

## AEROMAX Intercom Features:

- Full-duplex speakerphone with background noise immunity
- Dual "Strike" Relays for controlling two independent access points
- "Request-To-Exit" (RTE) switch support
- Standard Stainless Steel housing, optional Bronze
- Multiple outdoor and indoor units can be utilized within a facility
- Each outdoor unit can be assigned a unique "access point ID"
- Aux input port for "auto calling" Inside unit after detecting a vehicle at entry way
- Designed to easily utilize solar panels for power in remote wire-free applications
- Long Range audio communication: up to 4000 feet (direct line-of-site)
- Robust radio communication with excellent interference immunity against walkie-talkies cell phones, - pagers and handsets, 900 MHZ technology (1000 mW)
- Reliable Wireless Performance: Secure communication link – proprietary encryption
- 10 selectable channels for cross-talk immunity between adjacent facilities



### 2 Different Choices for Outdoor Wireless Intercoms

#### Outdoor Wireless Intercom

#### Outdoor Wireless Intercom with Keypad 500 User Codes



200



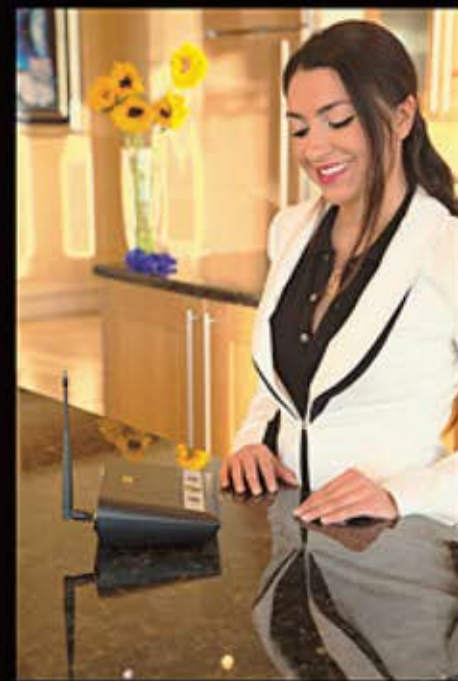
200K

Residential

Ranch



- Simple "dashboard-like" interface that visually guides installer
- Signal QUALITY LED (bar graph) - indicates radio range performance
- Signal LEVEL LED (multi-color) - indicates radio Signal Strength
- Status LEDs for each terminal - for easy installation & troubleshooting
- Built-in lightning protection on ALL terminals
- immune to 20KVolts, 10KAmps Surges
- Operating Temp Range: -40 to +158 F
- Vandal-resistant stainless steel outdoor enclosure with illuminated "Call" button
- "flush mount" indoor enclosure or "desk top unit" with selectable finishes
- Made in USA - FCC approved
- Keypad AEROMAX 200K: Up to 500 user codes, Stainless steel keypad, Piezoelectric technology, Laser marked keypad graphics -
- 3 Programmable outputs, Long lasting keypad is immune to dust and water damage



### 3 Different Choices for Indoor Wireless Intercoms

**Desktop Unit**



100

**Surface-mount Unit**



100S

**Flush-mount Unit**



100F

**Commercial**

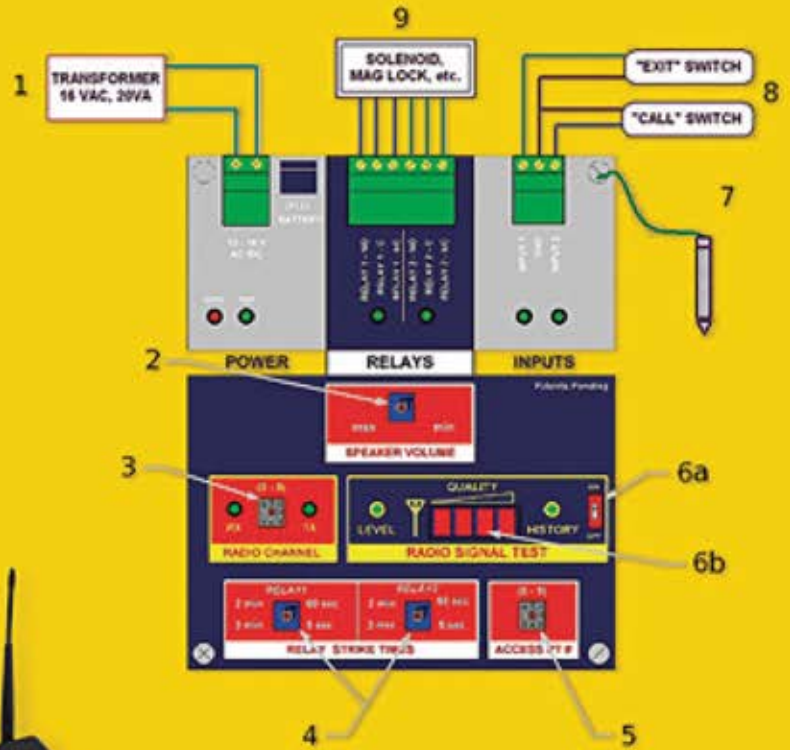


**Industrial**



# So Easy to Install

- 1) Install Power Transformer
- 2) Adjust Speaker Volume
- 3) Select Radio Channel (0-9)
- 4) Select Relays Strike Time
- 5) Select Access Point Number
- 6) Check Radio Range Signal
- 7) Connect Ground Rod
- 8) Connect Contact Inputs
- 9) Connect Relay Terminals



Multiple Units Can be Used Within a Facility

**2-YEAR WARRANTY!**



**NO TRENCHING Go Wireless!**



Solar Ready!